




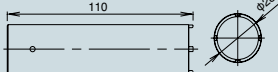


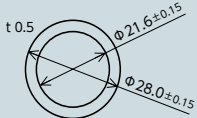
## Part Numbers

### Pilot Lights

Appearance	Lens	Rated Voltage	Part Number	Lamp Color
	Color	12V DC 24V DC	AP22M-2Q②①	R G Y A S PW
	Clear		AP22M-2Q②C①	R G Y A S

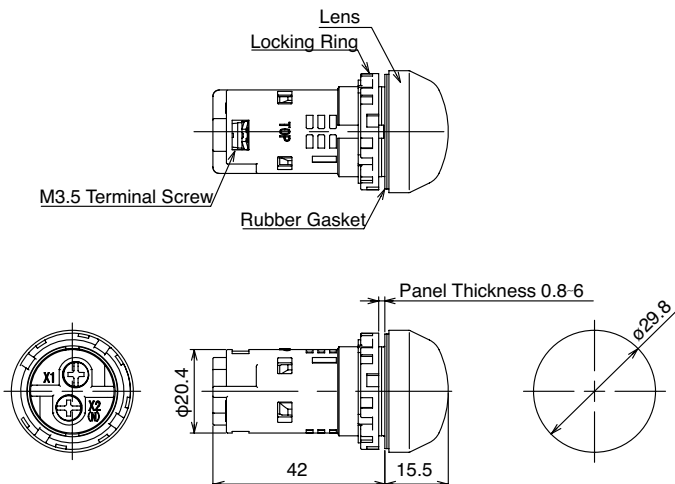
- In place of ① insert LED color. Red (R), Green (G), Yellow (Y), Amber (A), Blue (S), and White (PW).
- White (PW) only available as colored lens.
- In place of ② insert voltage code. For 12V DC use (3), for 24V DC use (4).
- LED cannot be removed or replaced.

### Accessories & Replacement Parts

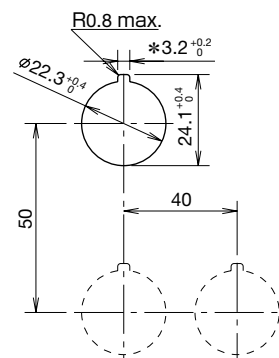
Appearance	Material	Part Number	Notes
	Metal (brass)	MW9Z-T1	Used for mounting unit into a panel. 
	Resin	YW9Z-PL12①	Dimension: $\phi 29.8$ H14.5 In place of ① insert color: R (Red), G (Green), Y (Yellow), A (Amber), S (Blue), C (Clear*)
	Nitrile rubber	HW9Z-WM	

- Nameplates: HWAM, HWAS-0, and CWAM. Go to [www.IDEC.com/usa](http://www.IDEC.com/usa) and review HW and CW Series catalogs for detailed information.
- \*Use a clear lens (C) for a PW (White) LED.

### Dimensions (mm)



### Panel cut-out (mm)



A 3.2mm  $^{+0.2}$  opening (notch) is used to stop rotation. (Not necessary if a nameplate is not used.)